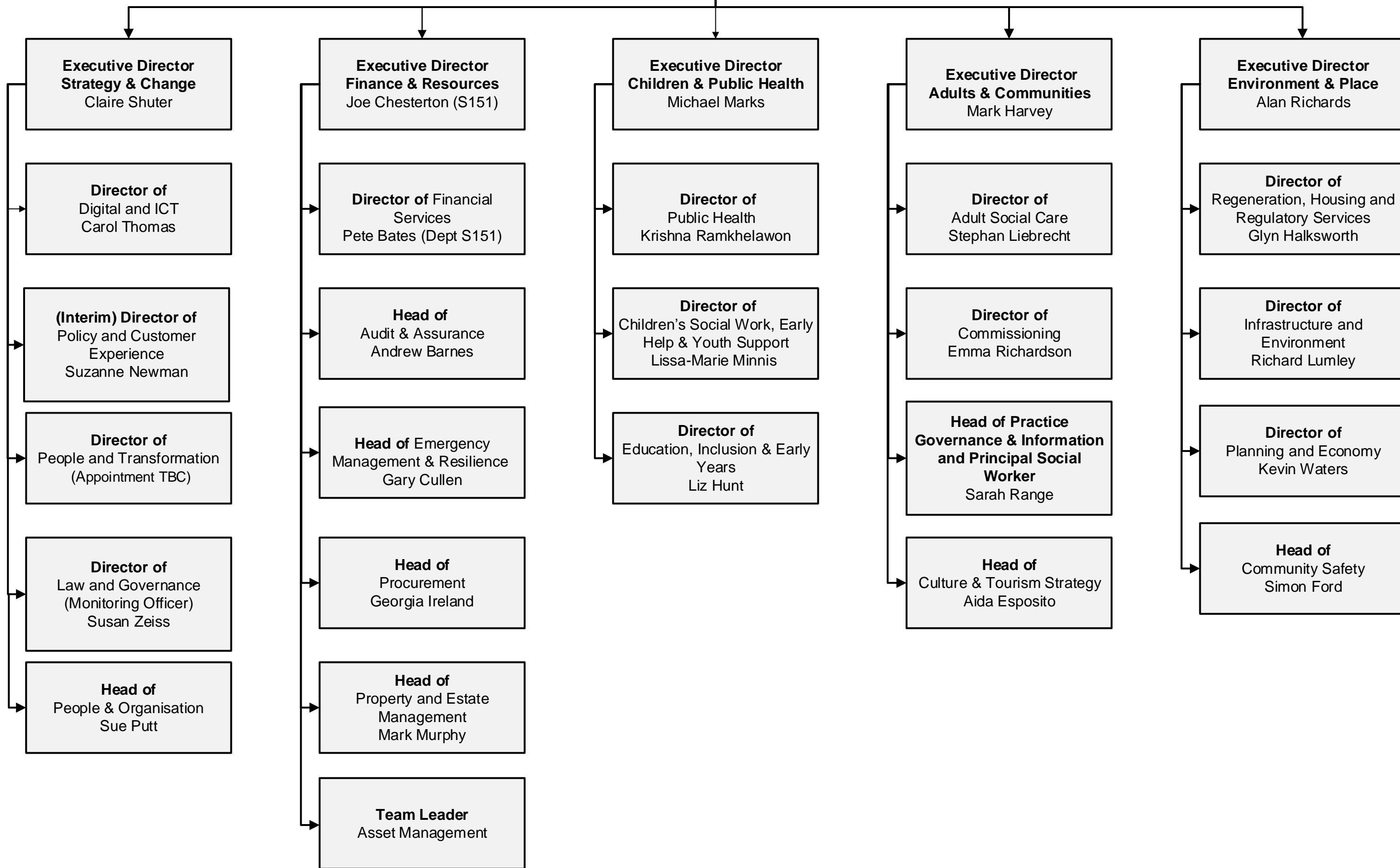
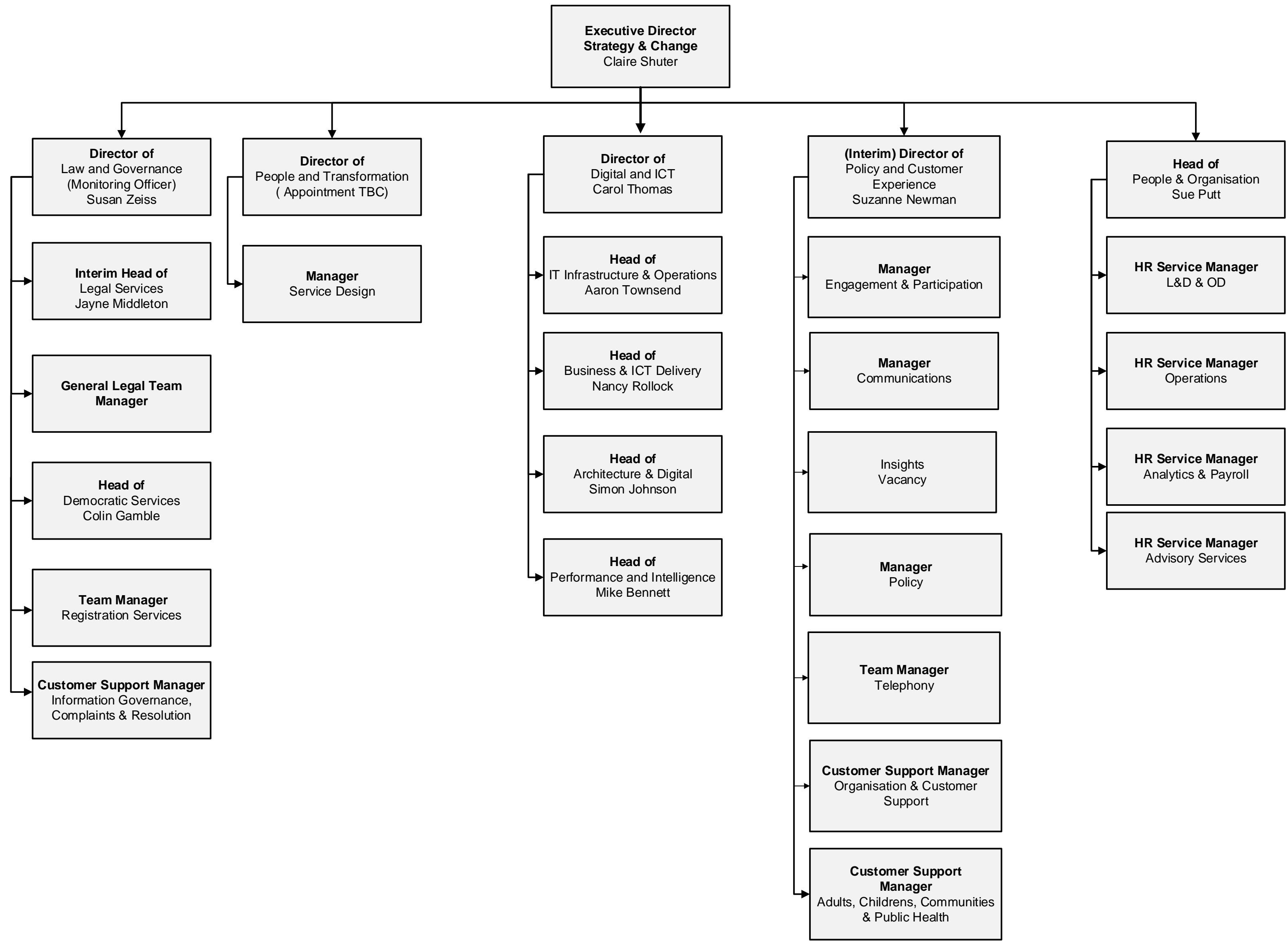


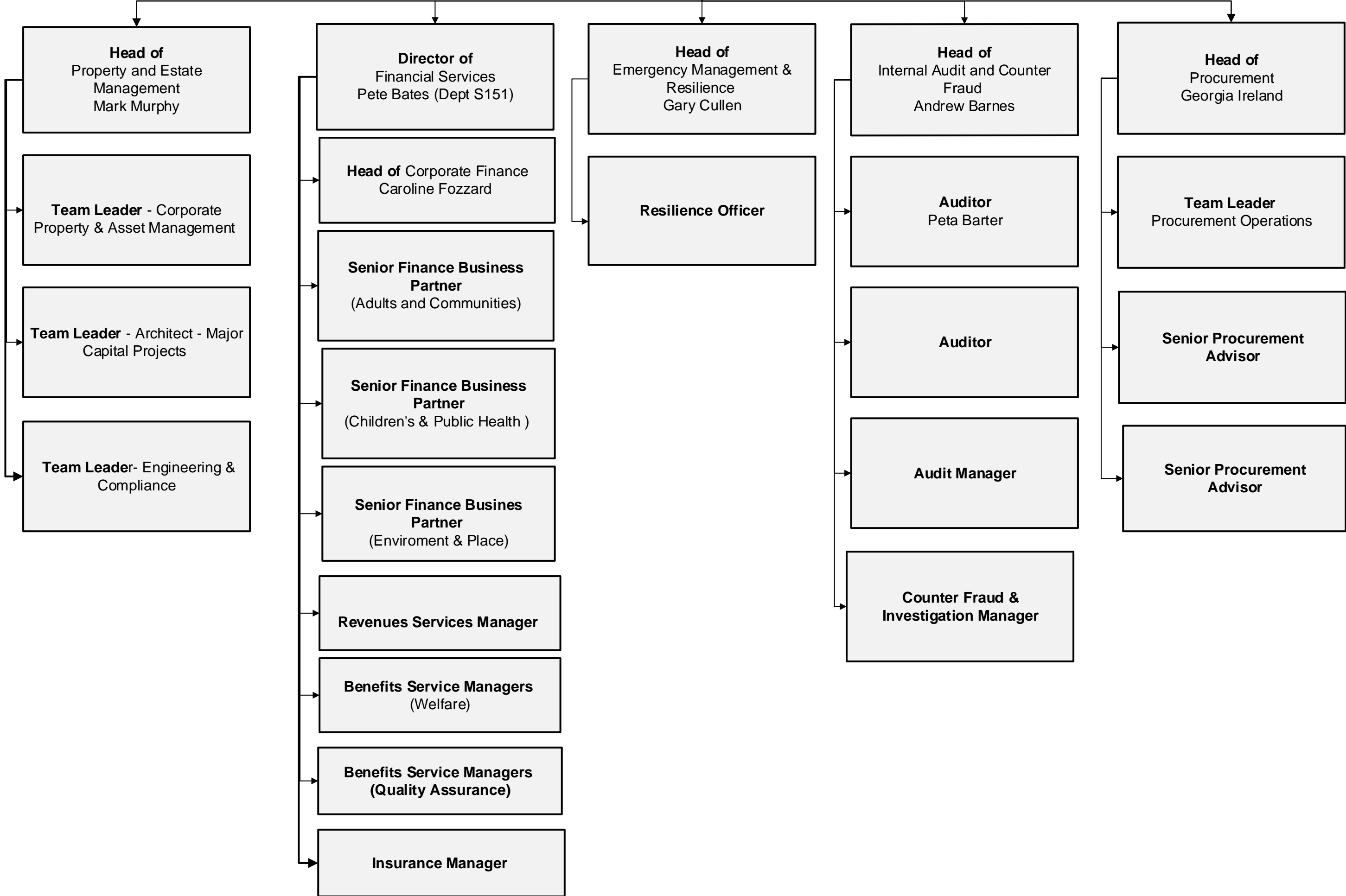
Direct reports to CLT

**Chief Executive
Colin Ansell**





**Executive Director
Finance & Resources**
Joe Chesterton (S151)



**Executive Director
Children & Public Health**
Michael Marks

**Director of
Education, Inclusion & Early
Years**
Liz Hunt

**Director of
Public Health**
Krishna Ramkhelawon

**Director of
Children's Social Work, Early
Help & Youth Support**
Lissa-Marie Minnis

**Head of School
Performance and
Improvement Service**
Amanda Champ

**Senior Public Health
Principal**
Erin Brennan-Douglas

**Head of Service
Intergrated Children, Youth
& Family Support**
Carol Compton

Head of Early Years
Vacancy

Public Health Consultant

**Head of Service
Children's Services**
John Walsh

Head of SEND
Vacant

**Senior Lead
Children & Public Health
Department**

**Head of Quality, Practice &
Principal Social Worker**
Ruth Baker

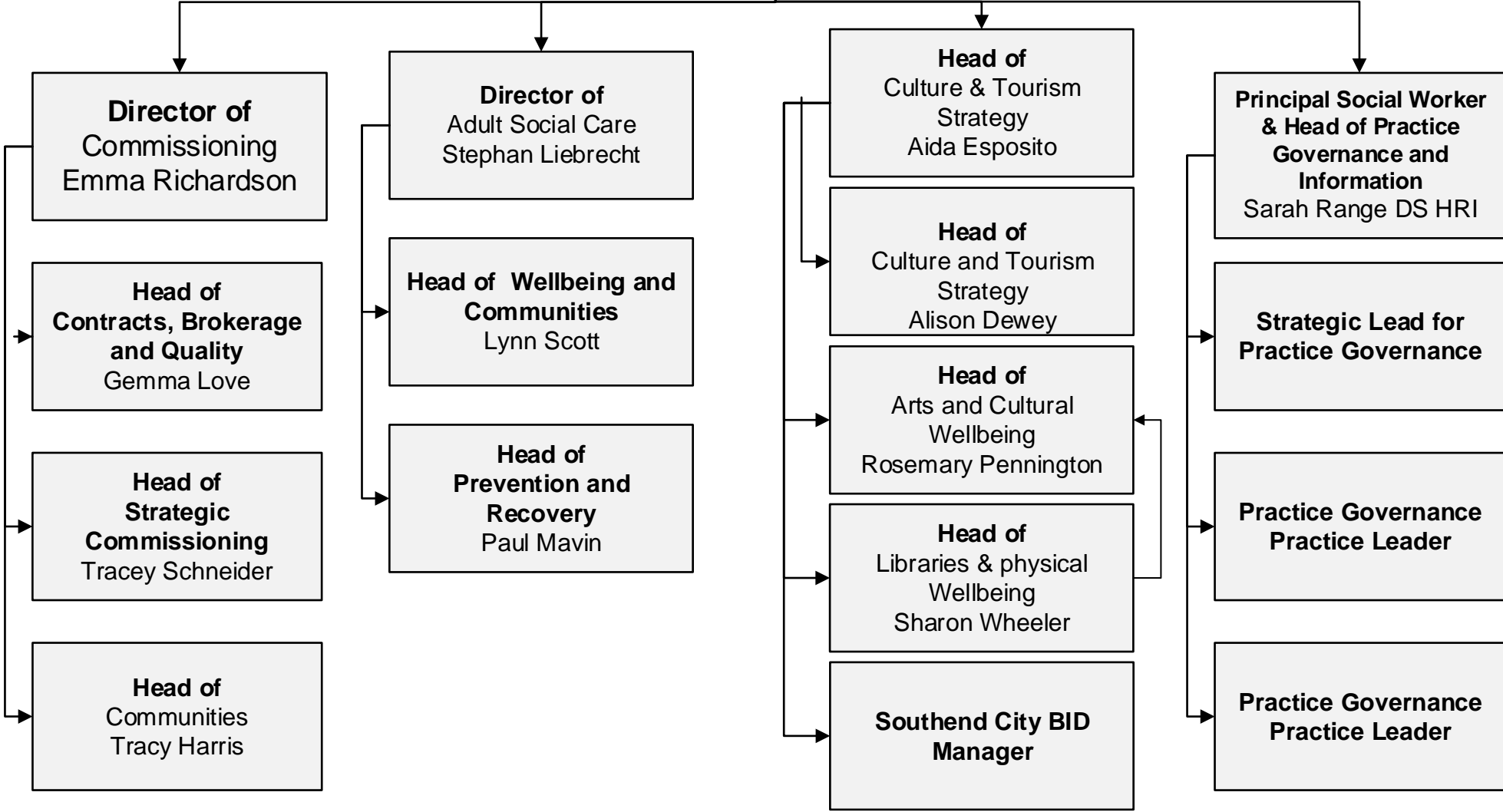
**Head of Access and
Inclusion**
Cathy Braun

Public Health Consultant

**Head of
Corporate Parenting
(Appointment TBC)**

**Senior Public Health
Principal**
Margaret Gray

**Executive Director
Adults & Communities**
Mark Harvey



Executive Director
Environment & Place
Alan Richards

