

USER NOTE
 The Areas Susceptible to Surface Water Flooding dataset provides national coverage and has been produced using a highly simplified method that excludes urban sewerage and drainage systems, excludes buildings, and uses a single rainfall event. It is noted that this mapping is intended for use by the Local Resilience Forums solely to inform emergency planning and should not be used for spatial planning decisions. In addition, the Environment Agency strongly recommend that local knowledge is applied to assess the suitability of the mapping as an indicator of surface water flooding before emergency planners make decisions based upon it.

In line with these recommendations, records of flooding and additional draft modelled results from the Surface Water Management Plan for Southend-on-Sea BC have been used in order to verify this information, a discussion of which is provided in Sections 3.6 and 4.6 of the Level 1 SFRA Main Report. For further, more detailed, assessment of surface water flooding across the borough the reader is directed to the Surface Water Management Plan currently being prepared for Southend-on-Sea BC.

FIGURE 9 - AREAS SUSCEPTIBLE TO SURFACE WATER FLOODING

LEGEND

- Administrative Boundary
- More
- Intermediate
- Less
- Sewer flooding records (Anglian Water DG5 Register)
- Surface Water Flooding Incidents (SoSBC Dataset)

LEVEL 1 STRATEGIC FLOOD RISK ASSESSMENT



Scott Wilson
 6-8 Greencoat Place
 London, SW1P 1PL
 Tel: (020) 7798 5000



DRAWN BY	CHECKED BY	DATE	SCALE @ A3	ISSUING OFFICE	REV
SL	EG	SEP 2010	1:35,000	LONDON	FINAL

THIS MAP IS REPRODUCED FROM ORDNANCE SURVEY MATERIAL WITH THE PERMISSION OF ORDNANCE SURVEY ON BEHALF OF HER MAJESTY'S STATIONERY OFFICE.
 © CROWN COPYRIGHT UNAUTHORISED REPRODUCTION INFRINGES CROWN COPYRIGHT AND MAY LEAD TO PROSECUTION OR LEGAL PROCEEDINGS.
 SCOTT WILSON GD0100031673 2010

FIGURE 9

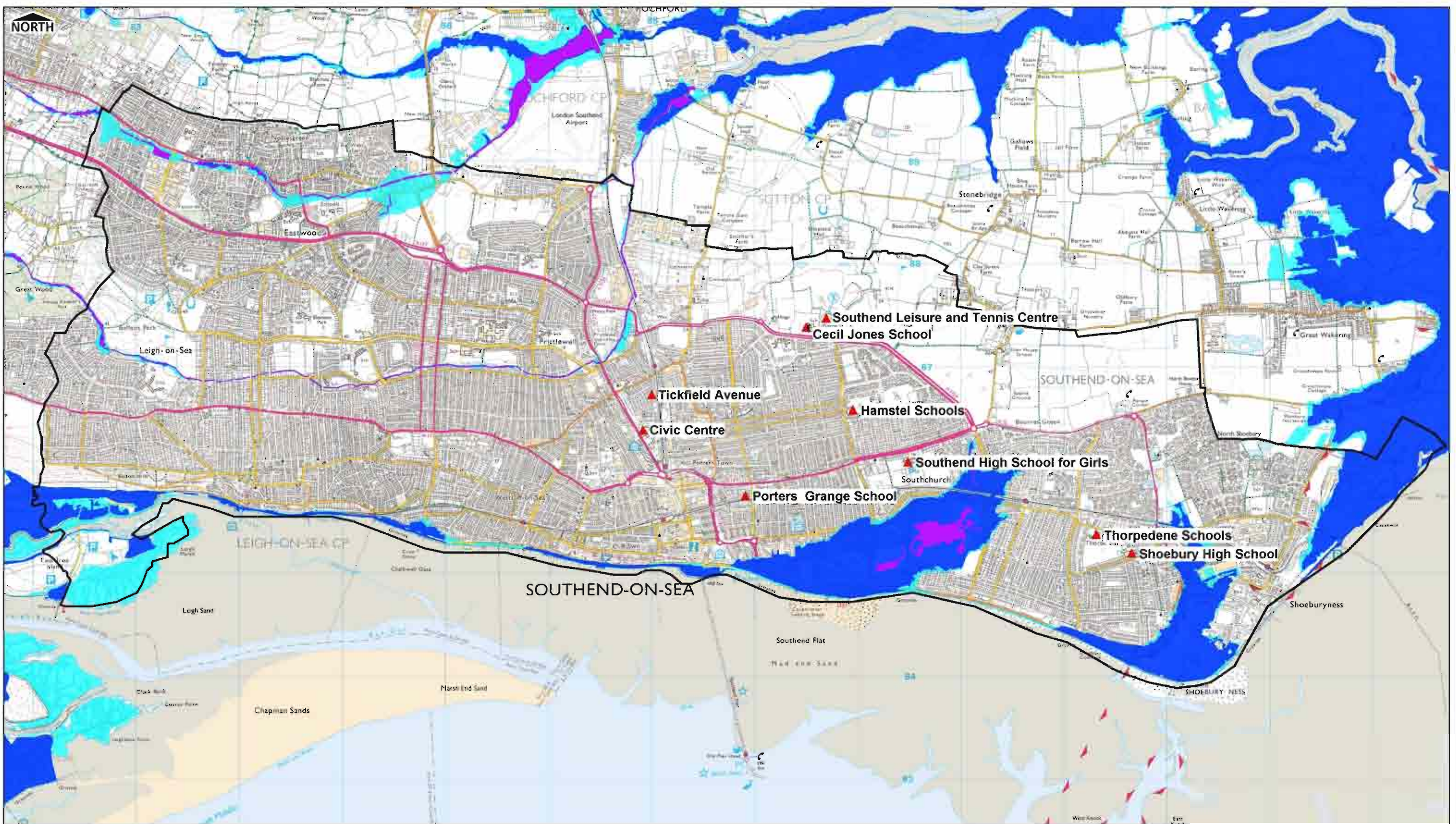


FIGURE 10 - REST CENTRES WITH EA FLOOD ZONES

LEGEND

- ▲ Rest Centres in Southend-on-Sea
- Administrative Boundary
- EA Flood Zone 3a
- Modelled (Fluvial) Flood Zone 3t
- EA Flood Zone 2

LEVEL I STRATEGIC FLOOD RISK ASSESSMENT



Scott Wilson
6-8 Greencoat Place
London, SW1P 1PL
Tel: (020) 7798 5000



DRAWN BY EC	CHECKED BY EG	DATE SEP 2010	SCALE @ A3 1:35,000	ISSUING OFFICE LONDON	REV FINAL
----------------	------------------	------------------	------------------------	--------------------------	--------------

THIS MAP IS REPRODUCED FROM ORDNANCE SURVEY MATERIAL WITH THE PERMISSION OF ORDNANCE SURVEY ON BEHALF OF HER MAJESTY'S STATIONERY OFFICE.
© CROWN COPYRIGHT UNAUTHORISED REPRODUCTION INFRINGES CROWN COPYRIGHT AND MAY LEAD TO PROSECUTION OR LEGAL PROCEEDINGS.
SCOTT WILSON GD0100031673 2010

FIGURE 10

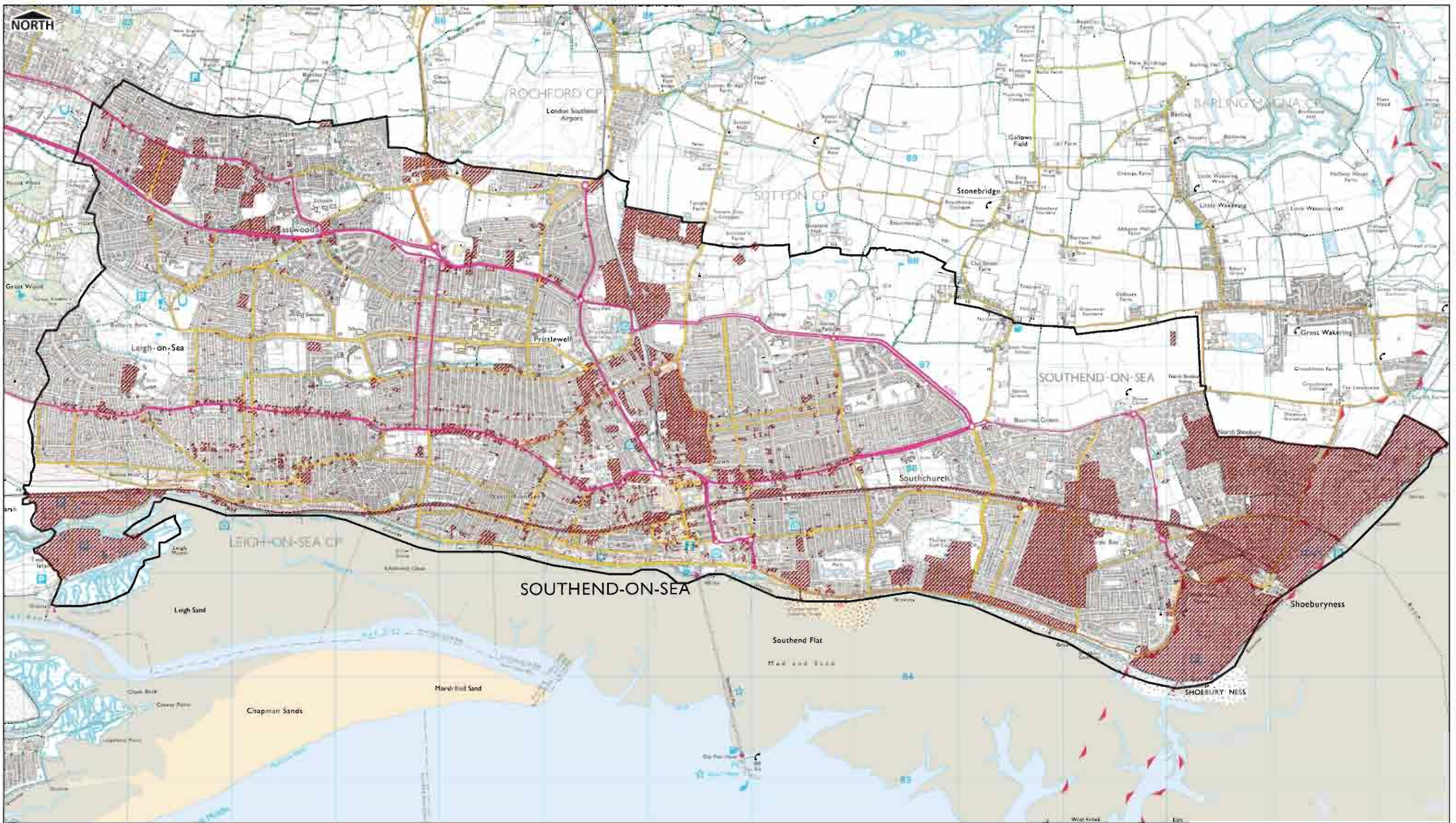




FIGURE 11 - Contaminated Land sites

LEGEND

-  Contaminated Land sites
-  Southend-on-Sea boundary

**LEVEL I STRATEGIC
FLOOD RISK ASSESSMENT**



Scott Wilson
6-8 Greencoat Place
London, SW1P 1PL
Tel: (020) 7798 5000



DRAWN BY EC	CHECKED BY EG	DATE SEP 2010	SCALE @ A3 1:35,000	ISSUING OFFICE LONDON	REV FINAL
----------------	------------------	------------------	------------------------	--------------------------	--------------

THIS MAP IS REPRODUCED FROM ORDNANCE SURVEY MATERIAL WITH THE PERMISSION OF ORDNANCE SURVEY ON BEHALF OF HER MAJESTY'S STATIONERY OFFICE.
© CROWN COPYRIGHT UNAUTHORISED REPRODUCTION INFRINGES CROWN COPYRIGHT AND MAY LEAD TO PROSECUTION OR LEGAL PROCEEDINGS.
SCOTT WILSON GD0100031673 2010

FIGURE 11

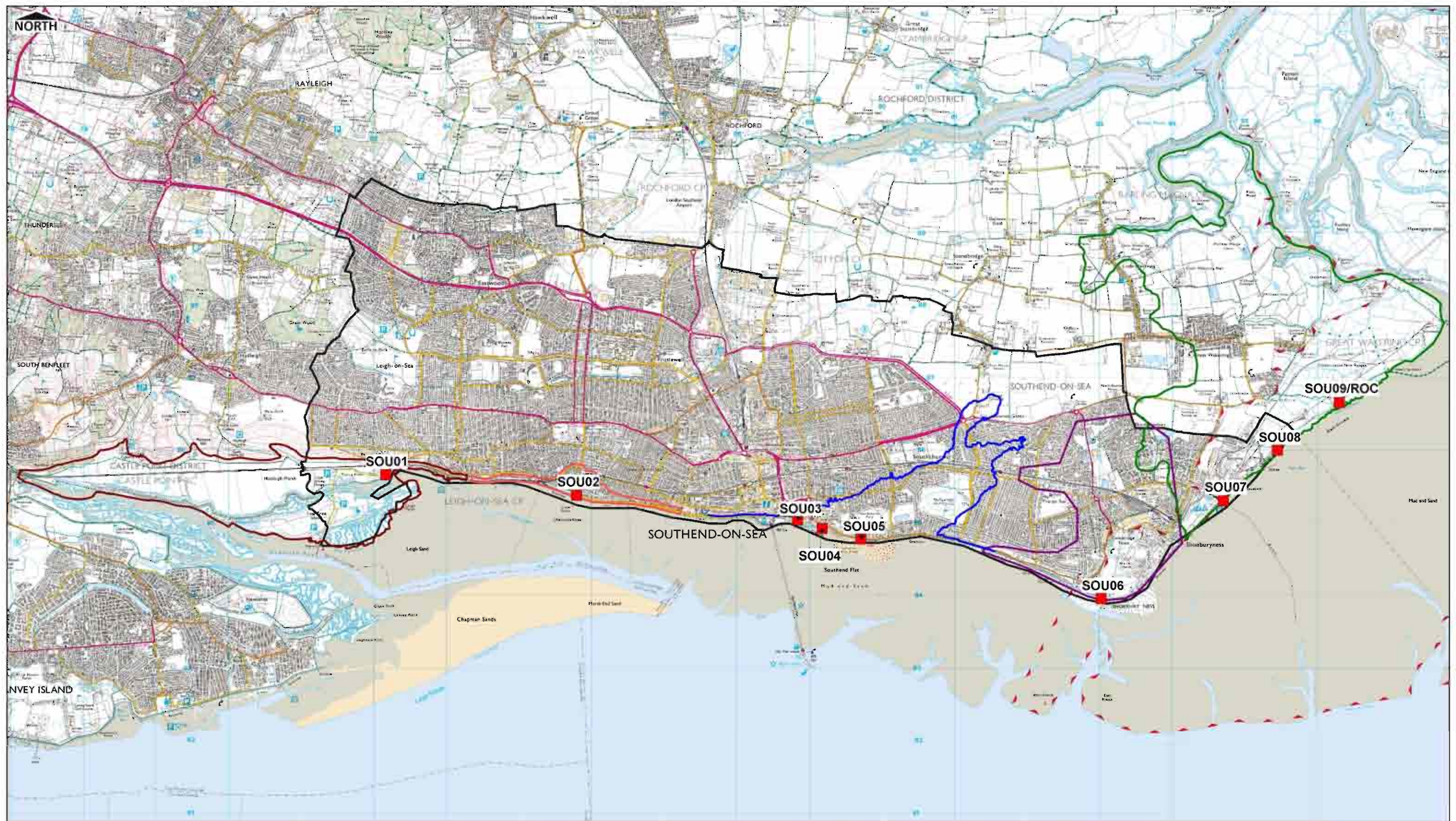


FIGURE 12 - SOUTHEND BREACH LOCATIONS & FLOOD CELLS

LEGEND			
	SOU01		Breach Locations
	SOU06		
	SOU02		SOU07/08/09_ROC
	SOU03/04/05		Southend Boundary

**LEVEL II STRATEGIC
FLOOD RISK ASSESSMENT**



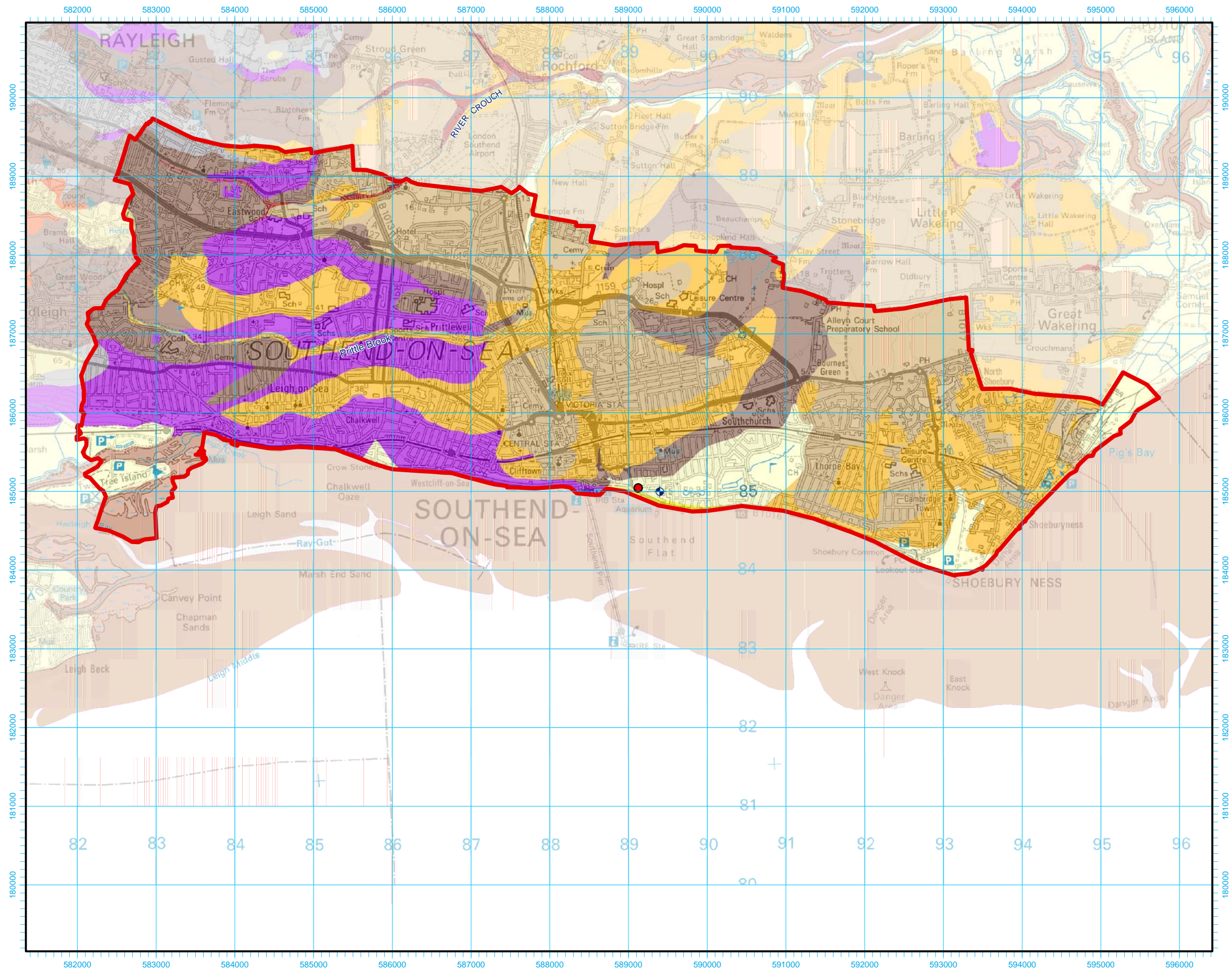
Scott Wilson
6-8 Greencoat Place
London, SW1P 1PL
Tel: (020) 7798 5000



DRAWN BY	CHECKED BY	DATE	SCALE @ A3	ISSUING OFFICE	REV
EC	EG	SEP 2010	1:50000	LONDON	FINAL

THIS MAP IS REPRODUCED FROM ORDNANCE SURVEY MATERIAL WITH THE PERMISSION OF ORDNANCE SURVEY ON BEHALF OF THE CONTROLLER OF HER MAJESTY'S STATIONERY OFFICE © CROWN COPYRIGHT. UNAUTHORISED REPRODUCTION INFRINGES CROWN COPYRIGHT AND MAY LEAD TO PROSECUTION OR CIVIL PROCEEDINGS. ENVIRONMENT AGENCY 100026380 2010

FIGURE 12



Legend

- Council Groundwater Flooding Incident
- ⊕ EA Groundwater Level Data
- ▭ Southend-on-Sea Borough Council Boundary

Drift Geology

- Alluvium (Clay, Silt and Sand)
- Beach and Tidal Flat Deposits (Clay, Silt and Sand)
- Blown Sand
- Glaciofluvial Deposits (Sand and Gravel)
- Head (Clay, Silt and Sand)
- River Terrace Deposits (Sand and Gravel)
- River Terrace Deposits (Silt and Clay)
- Tidal Flat Deposits (Clay and Silt)

Bedrock Geology

- Bagshot Formation
- Claygate Member
- London Clay

Drawing Status **DRAFT**

Job Title
Southend-on-Sea Strategic Flood Risk Assessment

Drawing Title
Geological Map

Scale at A3

Drawn by Bahar Vural	Date Feb 2010	Approved	Date
-------------------------	------------------	----------	------

Scott Wilson
Victoria House, London Square
Cross Lanes, Guildford
Surrey, GU1 1UJ
Telephone (01256) 310800
Fax (01483) 457845
www.scottwilson.com


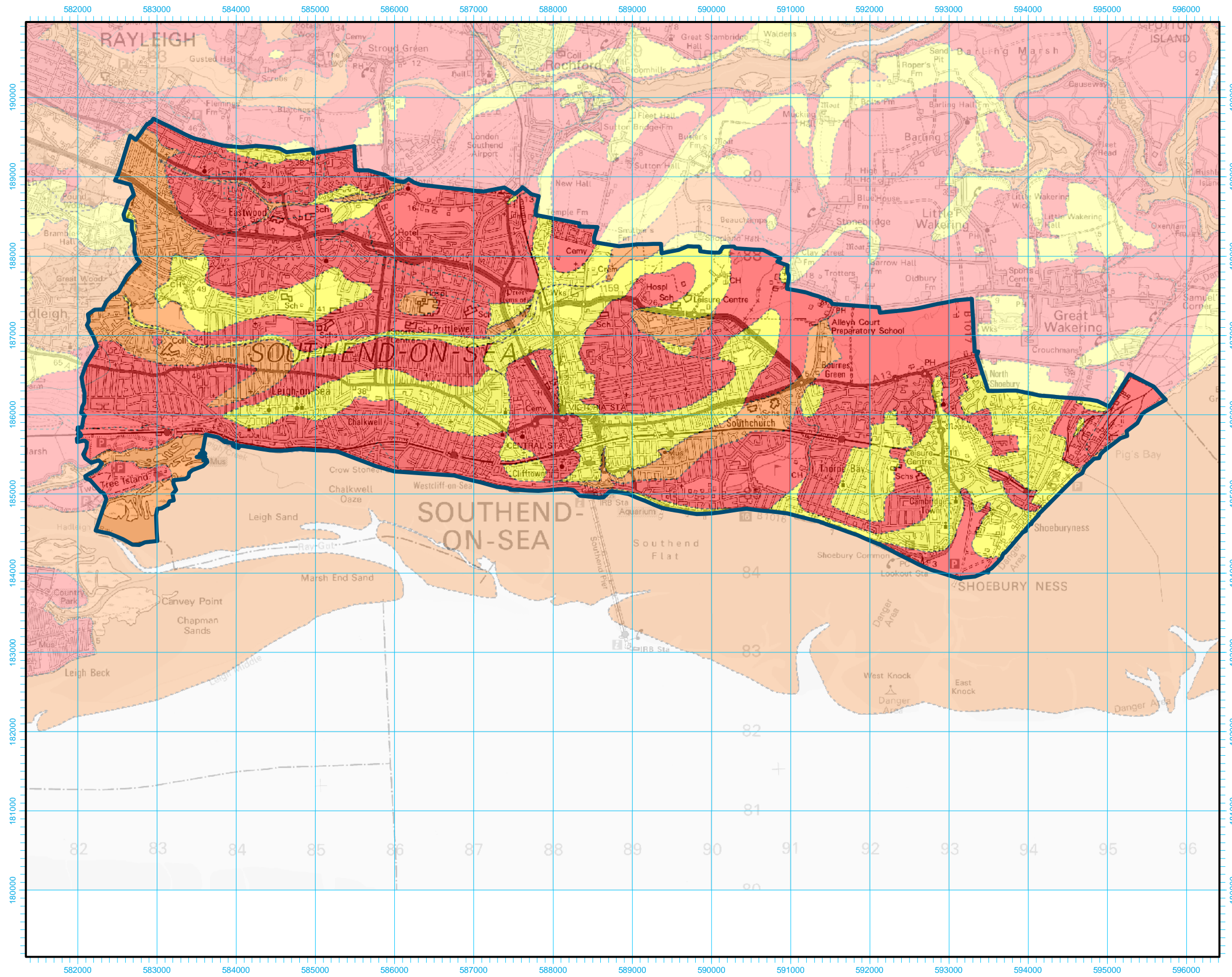


FIGURE 13





'Reproduced from 1:50 000 by permission of Ordnance Survey on behalf of the Controller of Her Majesty's Stationery Office © Crown Copyright 2008. All rights reserved. Reference number [0100031673].'
'Digital geological map data reproduced from British Geological Survey (c) NERC Licence No 2003/107'

Base Map Details
Projection: Transverse Mercator
Scale Factor: 0.999601
Origin: 2° West, 49° North
Coordinates: 400000, -100000
Units: metres
Datum: OSGB 1936

K:\JOBS\126882 Southend-on-Sea Scoping SWMP\700 Technical\711 GIS\01 Layout\Geological Map.mxd



LEGEND

-  Southend-on-sea Borough Council Boundary
-  Expect high infiltration potential
-  Expect medium infiltration potential
-  Expect low infiltration potential

Notes:
This map considers infiltration potential based on drift and solid geology descriptions only. Investigation is required to understand local geological and groundwater conditions.

Drawing Status **DRAFT**

Job Title
Southend-on-Sea Borough Council Strategic Flood Risk Assessment

Drawing Title
DELINEATION OF AREAS ACCORDING TO INFILTRATION POTENTIAL

Scale at A3 1 : 50 000

Drawn by Bahar Vural	Date Mar 2010	Approved Steve Cox	Date Mar 2010
-------------------------	------------------	-----------------------	------------------

Scott Wilson
Scott House, Alencon Link,
Basingstoke, Hants,
RG21 7PP
www.scottwilson.com
Telephone (01256) 310200
Fax (01256) 310201



FIGURE 14

'Reproduced from 1:50 000 by permission of Ordnance Survey on behalf of the Controller of Her Majesty's Stationery Office © Crown Copyright 2008. All rights reserved. Reference number [0100031673].'
'Digital geological map data reproduced from British Geological Survey (c) NERC Licence No 2003/107'

Base Map Details
Projection: Transvers Mercator
Scale Factor: 0.999601
Origin: 2° West, 49° North
Coordinates: 400000,-100000
Units: metres
Datum: OSGB 1936